



CMS ELECTRIC COOPERATIVE

The Enlightener

CMS Electric Cooperative, Inc.

Board of Trustees

- Ron Oliver**
President
- Michael Johnson**
Vice President
- Linda Tomlinson**
Secretary-Treasurer
- Wes McKinney**
Trustee
- Joe Murphy**
Trustee
- Don Nighswonger**
Trustee
- Rock Ormiston II**
Trustee
- Keith Randall**
Trustee
- R. Gary Warden**
Trustee

Lightbulb Winners

Congratulations to this month's lightbulb winners:

- ▶ Dewayne Moore
- ▶ Korina Ortega
- ▶ Gertrude Norman
- ▶ Galen Rankin
- ▶ Jessica Staggs
- ▶ George Wasden

Contact us today for your free lightbulbs!



Nondiscrimination

This institution is an equal opportunity provider and employer.

Important Rate Information

The Need for a Rate Change

The board of trustees approved the current CMS retail rates in 2017. The cost to provide electric service to the membership continues to increase due to inflation, a decrease in kilowatt-hour (kWh) sales, and the impact of COVID-19 upon the economy. CMS was also impacted by a major ice storm and wildfire in 2017. It is now necessary to adjust the rates to reflect the current operating conditions.

The combination of these factors has caused CMS's financial ratios to decline below the levels required by our mortgage lender, National Rural Utilities Cooperative Finance Corporation (CFC). CFC provides financing to build and maintain the distribution system used to supply electricity to our members.

The Process for a Rate Change

The board of trustees retained C.H. Guernsey and Co. in 2020 to begin a

cost-of-service study. The study identifies the costs associated with providing electricity to each class of customer (residential, irrigation, commercial). The current costs are reviewed and compared to the rates currently being charged to determine the adjustments warranted for each class of customer. The study will be presented to the members on Dec. 7, 2021, at 6:30 p.m. at the Meade Library Community Room. The board of trustees will consider the rate change at an open meeting on Dec. 20, 2021, at 1 p.m. at the CMS offices in Meade.

The board has devoted a great amount of time and effort to this process and understands that any rate change requiring an increase in charges is never an easy thing. There is never a good time for this and we have delayed the change as long as possible. We appreciate your questions and input as we proceed.

THE CMS BOARD OF TRUSTEES



12 Days of Holiday EFFICIENCY

Deck the halls with LED holiday lights.



Use a timer to turn off holiday lights at night.

Lower the thermostat when guests arrive.



Ask Santa for a smart or programmable thermostat to save energy.

Close the fireplace damper when a fire is not burning.



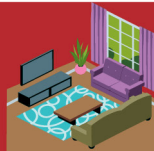
Unplug appliances and electronics before heading out of town.

Gifting new electronics or appliances? Look for the ENERGY Star® logo.



Keep the winter chill outdoors by sealing air leaks around your home.

Open the blinds and curtains during the day to let natural sunlight warm your home.



Consider rechargeable batteries and chargers for stocking stuffers!

Instead of opening the oven door, use the oven light to check the progress of your holiday feast!



Turn off household lights to enjoy the ambiance of your lighted Christmas tree.

TO THE MEMBERS OF CMS ELECTRIC COOPERATIVE, INC.

Notice of Special Board Meeting

The board of trustees of the CMS Electric Cooperative, Inc. will meet on Monday, Dec. 20, 2021, at 1 p.m. at the cooperative's offices located at 509 E. Carthage in Meade to discuss and vote upon a proposal to implement a change in rates.

The proposal is to adjust rates at an overall rate of 9.78%, thereby increasing the revenue requirement by \$2,349,974 based upon the 2020 test year.

This meeting is open to any member that wishes to attend. Members have the right under K.S.A. 66-104(g) to request Kansas Corporation Commission review of any rate change. Any member with questions may contact CMS Electric Cooperative during business hours at 620-873-2184.

Enter to Win a Willie Wiredhand Holiday Ornament

The 2021 Willie Wiredhand Commemorative Holiday Ornaments have arrived! CMS will hold a drawing for **FIVE ORNAMENTS**.

To be eligible for the drawing, please complete and return the entry form to the CMS office in Meade, either in person or mail to: CMS Electric Cooperative Inc. P.O. Box 790 Meade, KS 67864

Entries must be received by **5 P.M. ON DEC. 20, 2021**. Winners will receive the ornament in the mail.

Willie Wiredhand Ornament Drawing



Clip and return to CMS Electric Cooperative, Inc., P.O. Box 790, Meade, KS 67864, by 5 p.m. on Dec. 20, 2021.

Name _____

Address _____

City, State, Zip _____

Phone _____

Email _____

ENERGY EFFICIENCY Tip of the Month

Heading out of town for the holiday season? Remember to unplug electronics that draw a phantom energy load. Some gadgets like TVs, phone chargers, gaming consoles and toothbrush chargers use energy when plugged into an outlet — even when they're not in use.



2022 CMS Scholarships Available

The CMS Electric Cooperative, Inc., scholarships are six \$1,000 scholarships awarded annually to eligible applicants.

Purpose

To support development of effective leaders through educational opportunities.

Objective

To provide financial assistance to make it possible for six high school graduates based upon scholastic and extracurricular achievements to continue their education.

Scholarship Eligibility

Current high school seniors whose parents/guardians are members of CMS Electric Cooperative, Inc., are eligible to apply for these scholarships. Each applicant must intend to enroll as a full-time student in an accredited university or college, including junior, community, vocational or technical college. All applicants for the CMS Electric Scholarship shall be considered on the above criteria without regard to race, age, color, religion, gender, national origin, or existence of physical handicap.

Scholarship Criteria

Scholarship merit is based on three categories: scholastic achievement, school extracurricular activities and community activities.

How to Apply

Students who wish to apply should contact the CMS Electric Cooperative, Inc. office, or a CMS board trustee from within the district in which they reside to obtain application forms, or print form from the CMS website www.cmselectric.com. Completed applications must be postmarked and/or returned to CMS Electric Cooperative, Inc., **BY FEB. 10, 2022.**

MAIL APPLICATIONS TO: Scholarship Committee, CMS Electric Cooperative, Inc., P.O. Box 790 Meade, KS 67864

Questions about the scholarship program should be directed to Kirk A. Thompson, CMS General Manager, at 620-873-2184 or 800-794-2353.

Selection Procedure

Selection is made by the scholarship committee of CMS Electric Cooperative, Inc. Applicants must be willing to be interviewed by the committee, if necessary. Decisions made by this committee shall be final. Runners-up will be selected in the event the recipient forfeits rights to the scholarship.

Payment of Scholarships

The scholarship recipients shall provide proof of college enrollment satisfactory to CMS Electric Cooperative, Inc. The cooperative will then pay the institution. Should the recipient withdraw from college, payment of scholarship monies shall cease and reimbursement of unused monies shall be made to CMS Electric Cooperative, Inc.

Conditions

In the event the scholarship recipient receives financial assistance from other sources, which would constitute a full scholarship, the recipient shall notify CMS Electric Cooperative, Inc., and relinquish rights to the scholarship. The money shall then be awarded to the runner-up, provided that person continues to meet all criteria.

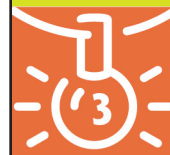
MERRY AND BRIGHT

Don't add stress to your holiday season. Knowing how to properly use and hang lights could prevent injury or fire.



Make sure your home's electrical system can handle the load.

Unplug light strands before changing a bulb or string fuse.



Do not use cords or plugs that are frayed or cracked.

Only use lights certified by a reputable testing lab (UL).

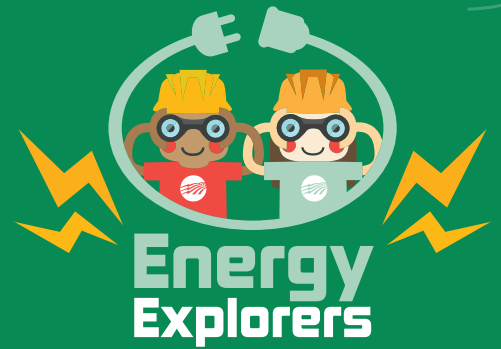


Consider LED lights when replacing old strands. LEDs use 80-90% less energy than incandescent bulbs.

HOLIDAY SAFETY WORD SEARCH

Remember to keep electrical safety in mind this holiday season!

Read the safety tips below,
then find and circle the bolded words in the puzzle.



D	T	T	X	M	L	N	L	W	V	B	H	G	P	M
P	E	Y	E	N	H	S	A	G	E	T	Q	W	C	O
D	C	R	A	K	P	T	C	K	J	X	N	C	J	Q
E	X	R	E	I	O	J	I	T	B	S	L	E	Y	I
M	P	W	W	T	W	F	R	V	V	Z	U	U	V	J
X	R	K	Z	Z	A	T	T	L	X	W	L	M	X	Y
D	T	Z	G	P	N	W	C	C	N	L	Z	A	H	Z
I	N	S	P	E	C	T	E	D	P	F	R	R	Z	T
D	P	G	V	B	E	E	L	L	Q	P	H	V	W	F
A	J	K	F	L	B	A	E	S	K	H	I	Z	W	M
N	M	V	D	T	W	V	X	R	I	R	B	H	U	C
C	O	N	B	B	R	W	O	H	O	W	Q	N	Q	P
X	A	W	X	S	N	O	I	T	A	R	O	C	E	D
C	K	L	B	T	K	R	A	J	B	C	M	D	Y	P
X	C	M	A	Y	S	K	B	O	Y	Q	M	Q	K	Q

- ▶ Do not overload electrical outlets with too many **decorations** or appliances.
- ▶ Make sure your Christmas tree is **watered** daily.
- ▶ Turn off all **electrical** decorations before leaving home or going to sleep.
- ▶ Never leave a **candle** burning if you're not in the room.
- ▶ Extension cords used for holiday decorations should always be **inspected** for damage or exposed wires.

