



CMS ELECTRIC COOPERATIVE

The Enlightener

CMS ELECTRIC COOPERATIVE, INC.

BOARD OF TRUSTEES

Wes McKinney
President

Keith Randall
Vice President

Chad McMillin
Secretary-Treasurer

Travis Apsley
Trustee

Michael Johnson
Trustee

Todd Lewis
Trustee

Don Nighswonger
Trustee

Vanessa Reeve
Trustee

CJ Skinner
Trustee

LIGHTBULB WINNERS

Congratulations to this month's lightbulb winners:

- ▶ Eva Felix
- ▶ Rosa Gaona
- ▶ Cindy Hagemeyer
- ▶ Rockie Hawley
- ▶ Jaquie Harmon
- ▶ Felicia Hoyt

Contact us today for your free lightbulbs!

NONDISCRIMINATION

This institution is an equal opportunity provider and employer.

Planned or Prescribed Burn Rule and Regulation

To protect infrastructure owned by CMS Electric Cooperative, including poles, equipment and power lines, from danger due to planned or prescribed pasture burns, the board has enacted Section 10, item B of the co-op rules and regulations effective March 27, 2023.

B. PLANNED OR PRESCRIBED BURNS AFFECTING PROPERTY OF CMS ELECTRIC COOPERATIVE, INC.

(1) TO ENSURE THAT THERE IS DIRECT COMMUNICATION WITH MEMBERS who are landowners regarding planned or prescribed burns of pasture or cropland for the purpose of protecting the property of CMS Electric Cooperative, Inc. when the planned burn area includes poles, equipment, and lines of CMS Electric Cooperative, Inc. Further,

to outline acceptable action by the landowner for the protection of such property of the electric cooperative, and to make it clear under what circumstances the member will be responsible for the costs of repair and replacement of damaged property of the electric cooperative.

(2) REQUIRED ACTION OF MEMBERS

Any member of CMS Electric Cooperative, Inc. who is an owner of land, or a tenant on land or adjacent

Continued on page 12C ▶

80TH ANNUAL MEETING MAY 7 | PROTECTION, KANSAS

The 2026 CMS Annual Meeting of the Members will be on **THURSDAY, MAY 7, 2026**, at South Central Middle School Gym in Protection. There will be a delicious meal catered by John Ross Catering for all cooperative members and their immediate families, starting at 5:30 p.m. The business meeting will begin at 6:30 p.m. Business will include reports on cooperative activities and the election of trustees. Valuable prizes and many energy credit certificates will be given away at the conclusion of the meeting. You must be present at the drawings to win.

PLEASE DON'T MISS YOUR ANNUAL MEETING. YOUR PARTICIPATION IS IMPORTANT!



What to Do When a Wildfire Looms

Millions of acres of U.S. woodland burn every year in thousands of wildfires across the nation.

Statistically, the majority of wildfires — about 85% — are started by humans. Many other fires are ignited by weather, including lightning strikes amid blistering heat and dry conditions.

Here are important safety tips from the Federal Emergency Management Agency (FEMA), www.Ready.gov and other safety organizations:

PREPARE NOW

- ▶ Gather emergency supplies, including N95-rated respirator masks. These masks filter out airborne particles. Keep in mind the special needs of those in your household, including prescription medications. Don't forget the needs of pets.
- ▶ Sign up for your community's warning system. National organizations such as the Emergency Alert System (EAS) and NOAA Weather Radio also provide emergency alerts.
- ▶ Have an evacuation plan in place for your household.
- ▶ Know your community's evacuation routes and scout out several different ways to leave your town or area. Drive the routes and become familiar with shelter locations. Have a plan for pets and livestock.
- ▶ Keep important documents in a fireproof safe.
- ▶ Review your insurance coverage to make sure it is adequate.
- ▶ Research and implement "defense zones" or defensible space to protect your home. Maintain a 30-foot circle around your home that is free from leaves, debris and flammable materials.
- ▶ Trim branches that overhang the home, porch and deck, and prune branches of large trees (depending on their height) at least 10 feet from the ground.
- ▶ Use fire-resistant materials when building, repairing or renovating your home.

DURING A WILDFIRE

- ▶ If authorities say to do so, evacuate immediately.
- ▶ If trapped, call 911 and give your location.
- ▶ Listen to alerts for emergency information and instructions.

AFTER A FIRE

- ▶ Do not return home until after authorities say it is safe to do so.
- ▶ Use caution when entering a home or building and avoid all standing water, which may have an electrical charge.
- ▶ If you see damage outside your home (downed power lines or damaged power or gas lines), vacate the area and call 911 to have the utility dispatched.
- ▶ If you detect electrical damage inside your home, hire a qualified electrician to assess your home.
- ▶ Check roofs and attics for hot spots or sparks and extinguish them immediately. Continue to check every few hours for at least 24 hours.

For more information about electrical safety, visit www.SafeElectricity.org.

WILDFIRE GO BAG

Checklist

<input type="checkbox"/> Cellphone & Charger	<input type="checkbox"/> Food & Water
<input type="checkbox"/> Clothing & Toiletries	<input type="checkbox"/> Important Documents
<input type="checkbox"/> Face Masks	<input type="checkbox"/> Medications
<input type="checkbox"/> First Aid	<input type="checkbox"/> Pet Essentials
<input type="checkbox"/> Flashlight & Batteries	



Responding to Wildfire Risks

As the threat of wildfires increases nationwide, electric cooperatives are working to mitigate the risk of fires and protect their local systems and communities. Co-ops are:

- ▶ Updating mitigation plans based on continuous assessment of wildfire risks that are no longer a seasonal concern but rather a year-round, nationwide challenge.
- ▶ Developing and practicing operational protocols and collaborating with first responders and other relevant agencies.
- ▶ Managing vegetation near power lines and other electrical equipment to decrease the volume of "fuel" and slow the spread.
- ▶ Educating cooperative member-owners on proper selection and placement of trees, bushes and other plants around power lines.
- ▶ Advocating for smarter land-management policies like the Fix Our Forests Act that would allow co-ops to better maintain power lines on public lands and reduce wildfire risk.

PHOTO BY CHELSEY GUFFY, ALFALFA ELECTRIC COOPERATIVE



Planned or Prescribed Burn Rule and Regulation

Continued from page 12A ▶

to land that contains poles, equipment, and lines of CMS Electric Cooperative, Inc., and further, when such Member intends to conduct a planned or prescribed burn on such land, such member or such member's agent or person conducting the burn shall proceed as follows:

(a) All regulations relating to prescribed burns as set forth in the Kansas Administrative Regulations setting for the rules and guidelines for prescribed burns applicable to Kansas must be followed. K.S.A. §28-19-64et seq.

(b) Within 24 hours of conducting such a planned burn of the surface of such land, contact the office of CMS Electric Cooperative, Inc. to inform the cooperative that such planned burn will take place and when and where it is intended to take place, specifically describing the legal description for the location of such burn.

(c) No more than one month prior to conducting such planned burn, the member or the member's agent or agents shall clear the surface debris and combustible dry growth to the surface of the ground around each utility pole of CMS Electric Cooperative, Inc., and the area to be cleared shall be 10 feet from the pole in all directions. This shall be done by burning the area described or by trimming weeds, raking, or scraping the ground so that there is no dry vegetation on the surface within the 10-foot area around each utility pole.

(d) After the most recent growing season and no more than six (6) months prior to said planned or prescribed burn, for pasture, weeds and grass, the area under the electric lines of the cooperative shall be mowed to a width that is at least 15 feet outside of the line or lines on each side of the extent possible.

(3) RESPONSIBILITY

(a) It is the responsibility of the member who is the landowner or

tenant responsible for the planned burn to comply with the requirements set forth herein. Photographs shall be taken by the member or the member's agent in order to establish compliance, in the event of any concern that arises after the fire has been completed.

In the event the above requirements have been met, and proof of the same established to the satisfaction of the electric cooperative, and in the further event that there is damage to the poles, equipment or lines of CMS Electric Cooperative, Inc., then the electric cooperative shall stand the cost of repair or replacement to any damaged poles, equipment, or lines.

(b) In the event that the member chooses to not comply with this rule or has not complied with this rule and policy of the CMS Electric Cooperative, Inc., and in the further event that a planned or prescribed burn is conducted and there is damage to the poles, equipment or lines of CMS Electric Cooperative, Inc., then it shall be the member's responsibility and requirement to stand the cost of repair or replacement to any damaged poles, equipment, or lines.

(c) The measure of damages for a member who is responsible as set forth above shall be as set forth in *Kansas Power and Light Co. v Thatcher*, 797 P. 2d 162, 14 Kan App 2d 613 (1990), which is the amount necessary to allow the electric cooperative to recover the cost of replacing or repairing the pole, equipment, or line, without deduction for depreciation, that was damaged by the member's actions.

(4) EFFECTIVE DATE OF RULE

This rule, 10 B, shall become effective upon the mailing of a complete copy of the same to all members, which may be done in connection with billing and/or by publication in *Kansas Country Living Magazine*. The mailing or publication shall occur after the date of the approval by the Board of Trustees of these Rules and Regulations.

WILDFIRE ALERTS AND WARNINGS AND WHAT THEY MEAN

Understanding alerts can help you know when to prepare and when conditions may become dangerous.

FIRE WEATHER ALERTS

RED FLAG WARNING:

Critical fire weather conditions are happening or about to happen.

FIRE WEATHER WATCH:

Conditions are dry, favorable for critical fire weather and could become dangerous.

NATIONAL WILDFIRE RISK LEVELS



LOW (GREEN): Fire starts are unlikely.

MODERATE (BLUE): Some wildfires may occur.

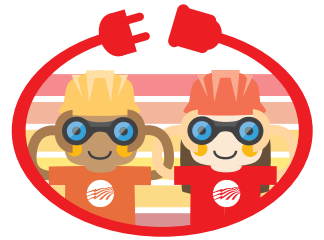
HIGH (YELLOW): Wildfires are likely.

VERY HIGH (ORANGE): Fires start easily and spread quickly, and are difficult to control.

EXTREME (RED): Fires start and spread rapidly. No outdoor burning should take place.

SOURCE: WWW.SAFEELECTRICITY.ORG

SOLAR ENERGY POP QUIZ



Energy Explorers

Word Bank

Solar Cell
Electricity
Solar Panels
Sun
Photons

1. _____ A star at the center of our solar system that provides light and heat.
2. _____ Flat devices often placed on rooftops that collect energy from the sun and help power homes and businesses.
3. _____ Tiny particles of energy that travel through space and reach Earth in about eight minutes.
4. _____ The basic building block inside rooftop equipment that converts sunlight into usable power.
5. _____ The type of energy that runs appliances, lights and electronics in your home.

Answer Key: 1. Sun 2. Solar Panels 3. Photons 4. Solar Cell 5. Electricity

