

CMS ELECTRIC COOPERATIVE

The Enlightener

CMS ELECTRIC COOPERATIVE, INC.

BOARD OF TRUSTEES

Ron Oliver
President

Michael Johnson
Vice President

Linda Tomlinson
Secretary-Treasurer

Wes McKinney
Trustee

Chad McMillin
Trustee

Don Nighswonger
Trustee

Keith Randall
Trustee

Vanessa Reeve
Trustee

CJ Skinner
Trustee

LIGHTBULB WINNERS

Congratulations to this month's lightbulb winners:

- ▶ Mark Clancy
- ▶ Michael Coles
- ▶ Nancy Cotton
- ▶ Shana Cramer
- ▶ David Driedger
- ▶ Darwin Ediger

Contact us today for your free lightbulbs!

NONDISCRIMINATION

This institution is an equal opportunity provider and employer.

Trustee Positions Open for Election

The Board of Trustees of CMS Electric Cooperative, Inc. announces the following trustees' terms will expire in 2024 and their positions are open for election.



VANESSA REEVER
District 1, Position A



WES MCKINNEY
District 2, Position A



DON NIGHSWONGER
District 3, Position A

Members wishing to serve on the board of trustees shall be nominated by presenting a petition to the cooperative office with the signatures of 15 valid members within the district they are to represent.

Blank petitions are available at the cooperative office in Meade, or call 800-794-2353 and one will be mailed to you. Completed petitions are due to the CMS office **BY APRIL 2, 2024.**

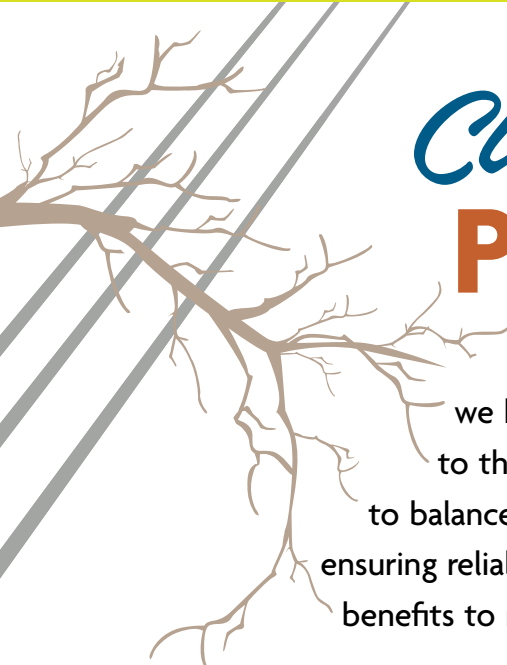
If you need additional information, please call CMS at 800-794-2353.

**PETITIONS
DUE APRIL 2**

**NEED MORE
INFORMATION?**

Call 800-794-2353





Clearing the Path to Reliability

Trees are majestic, beautiful and good for the soul. And, we know our members depend on us to deliver reliable power to their homes and businesses. That's why CMS Electric strives to balance maintaining the beautiful surroundings we all cherish with ensuring reliable electricity. You might not realize it, but there are several benefits to regular tree trimming.

RELIABILITY

Keeping power lines clear of overgrown vegetation improves service reliability. After all, we've seen the whims of Mother Nature during severe weather events with fallen tree limbs taking down power lines and utility poles. While many factors can impact power disruptions, about half of all outages can be attributed to overgrown vegetation. This is why you sometimes see CMS Electric crews or contractors out in the community trimming trees near power lines. Our trimming crews have been trained and certified based on the latest industry standards.

In fact, all U.S. electric utilities are required to trim trees that grow too close to power lines.

Scheduled trimming throughout the year keeps lines clear from overgrown or dead limbs that are likely to fall, and we are better able to prepare for severe weather events.

Plus, it's more cost-effective to undertake preventative maintenance than it is to make repairs after the fact.

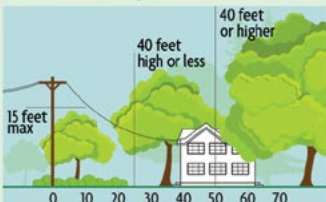
SAFETY

Working near power lines can be dangerous, and we care about your safety and that of our lineworkers. For example, if trees are touching power lines in our members' yards, they can pose a grave danger to families. If children can reach those trees, they can potentially climb into a

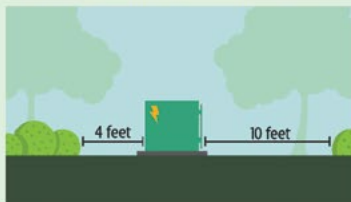
3 Ways to Help Limit Tree Trimming

Did you know electric utilities are required to trim trees and other types of vegetation that grow too close to power lines? We do everything we can to avoid trimming them, but **here's how you can help:**

1. Plant trees in the right place. Trees that will be less than 40 feet tall should be planted at least 25 feet away from power lines (greater than 40 feet tall should be planted at least 50 feet away).



2. Don't block pad-mounted transformers. Plant shrubs at least 10 feet away from transformer doors and 4 feet from transformer sides.



3. Report dangerous branches. If you spot a tree or branch that is dangerously close to power lines, let us know.



Trimming improves safety for all. Let's work together to enjoy the beauty of trees AND reliable electricity.

danger zone. Electricity can arc, or jump, from a power line to a nearby conductor such as a tree.

Any tree or branch that falls across a power line creates a potentially dangerous situation. A proactive approach lessens the chances of fallen trees during severe weather events that make it more complicated and dangerous for lineworkers to restore power.

AFFORDABILITY

As a co-op, CMS Electric always strives to keep costs down for our members. If trees and other vegetation are left unchecked, they can become overgrown and expensive to correct. A strategic vegetation management program helps keep costs down for everyone.

When it comes to vegetation management, there are ways you can help too. When planting new trees, make sure they're planted a

safe distance from overhead power lines. Medium-height trees (40 feet or smaller) should be planted at least 25 feet from power lines. Taller trees (over 40 feet) should be planted at least 50 feet from power lines. You can also practice safe planting near pad-mounted transformers. Plant shrubs at least 10 feet from the transformer door and 4 feet from the sides. If your neighborhood has underground lines, remember to contact 811 before you begin any project that requires digging.

Additionally, if you spot an overgrown tree or branch that's dangerously close to overhead lines, please let us know by calling 800-794-2353

We have deep roots in our community, and we love our beautiful surroundings. It takes a balanced approach, and our vegetation management program is a crucial tool in ensuring service reliability.



Trees — Too Close for (YOUR) Comfort

TREES CAUSE MAJORITY OF POWER OUTAGES

Although most trees do not present a problem, some of them grow into or crowd power lines, poles or other utility equipment and cause service issues. Unruly and overgrown trees can:

- ⚠️ Cause outages.
- 🔥 Create fire hazards.
- ✂️ Break off and land on power lines.
- 🌀 Cause lights to flicker during high winds.
- ❄️ Get weighed down with ice and cause issues.

Proper pruning techniques are used to preserve tree health, although sometimes a tree must be removed. This is a last resort, but it can be necessary if there are:

- 🌳 Fast-growing trees directly under power lines.
- 🌳 Trees that are leaning into lines.
- 🌳 Trees that are declining, cracked or split.

Unobstructed power lines make it easier and safer for utility crews to repair or service lines.

✔️ **Power companies trim trees to better serve you!**

SOURCE: WWW.SAFELECTRICITY.ORG

KEEP YOUR INFORMATION UP TO DATE

Please keep your contact information including phone number, email address and mailing address up to date.

Keeping your information up to date helps us keep you in the know about the business and operations of your electric cooperative.

Contact our offices at 800-794-2353 if you need to update the contact information on your account.

We appreciate your help in gathering this information.

STORM SAFETY

FILL-IN-THE-BLANK

Spring is a wonderful season, but it can bring powerful storms. Read the clues below, then use the word bank to complete the storm safety tips.



1. Keep a _____ handy in case of a power outage.

2. Be watchful for signs of a thunderstorm, including dark skies, flashes of _____ or strong winds.

3. If a _____ is issued, seek shelter in a centrally located room in your home, a basement or storm cellar.

4. If you're outside and hear _____, go indoors immediately.

5. Practice a tornado _____ with your family once a year.

WORD BANK

- ▶ thunder
- ▶ drill
- ▶ flashlight
- ▶ tornado warning
- ▶ lightning

ANSWER KEY: 1. FLASHLIGHT 2. LIGHTNING 3. TORNADO WARNING 4. THUNDER 5. DRILL