



A Touchstone Energy® Cooperative   
P.O. Box 790, 509 E. Carthage, Meade, KS 67864  
620-873-2184 or 800-794-2353  
[www.cmselectric.com](http://www.cmselectric.com)

## CMS ELECTRIC COOPERATIVE

# The Enlightener

### CMS Electric Cooperative, Inc.

#### Board of Trustees

- Ron Oliver**  
President
- Michael Johnson**  
Vice President
- Linda Tomlinson**  
Secretary-Treasurer
- Wes McKinney**  
Trustee
- Chad McMillin**  
Trustee
- Don Nighswonger**  
Trustee
- Keith Randall**  
Trustee
- Vanessa Reeve**  
Trustee
- R. Gary Warden**  
Trustee

#### Lightbulb Winners

Congratulations to this month's lightbulb winners:

- ▶ Kent Dunn
- ▶ Dora Finney
- ▶ Adan Garcia
- ▶ France Glaze
- ▶ Geneva Darty
- ▶ Bob Dunn

Contact us today for your free lightbulbs!



#### Nondiscrimination

This institution is an equal opportunity provider and employer.

## Sustaining a Reliable Electric System

We've all heard the phrase, "Don't put all your eggs in one basket." This popular adage is often used in conversation or a story when someone is about to do something foolish or risky. If they heed this advice, it means they did not commit to "one basket," but instead hedged their bets with multiple options.

This strategy is also how CMS Electric takes a common sense approach to the current energy transition. We know that consumer interest in renewable energy continues to grow. We've seen this trend here in Kansas.

Recent innovations and advances in renewable energy technologies have led to sharp decreases in costs, making

renewables more feasible, accessible and scalable. Nationally, there is increasing reliance on renewable energy sources at the same time that we're seeing fossil fuel plants taken off-line, often ahead of schedule. Additionally, there is more pressure on the electric grid due to the increasing frequency and intensity of severe weather events and rising electricity demand.

#### Competing Pressures

So how do we reconcile these challenges of grid pressure and a changing fuel mix? Solar and wind energy are certainly beneficial for the environment, but they are limited resources because the sun does not

*Continued on page 12B ►*

## 77th Annual Meeting

### Join Us May 4 in Protection

The 2023 CMS Annual Meeting of the Members will be on Thursday, May 4, at South Central Elementary/Middle School gym in Protection, Kansas. There will be a delicious meal catered by John Ross for all cooperative members and their immediate family starting at 5:30 p.m. The business meeting will begin at 6:30

p.m. Business will include reports on cooperative activities and the election of trustees. Valuable prizes and many Energy Credit Certificates will be given away at the conclusion of the meeting. You must be present at the time of drawings to win. Please don't miss your annual meeting. Your participation is important!



## ENERGY EFFICIENCY Tip of the Month

This planting season, include energy efficiency in your landscaping plans. Adding shade trees around your home can reduce surrounding air temperatures as much as 6 degrees. To block heat from the sun, plant deciduous trees around the south side of your home. Deciduous trees provide excellent shade during the summer and lose their leaves in the fall and winter months, allowing sunlight to warm your home.

SOURCE: [WWW.ENERGY.GOV](http://WWW.ENERGY.GOV)



## Sustaining a Reliable Electric System

*Continued from page 12A ►*

always shine, and the wind does not always blow. Our primary responsibility is to provide electricity 24/7 to you and our community. To do this, we need reliable sources of power that will meet all the peaks and valleys of on-demand energy in our connected world.

So where are we netting out? That's where our familiar adage comes into play. While utilization of renewables is increasing, we still need to incorporate other forms of energy in the mix to ensure reliable service. Remember, solar and wind are intermittent power sources. This fact coupled with the growing demand for renewables creates its own challenges.

That's why we spread our eggs into multiple baskets. There is great value in maintaining a diverse mix of fuel sources — fossil fuels and renewables work together to ensure reliability and resiliency and meet the growing demand for electricity.

Reliability also means repairing and replacing utility equipment to prevent

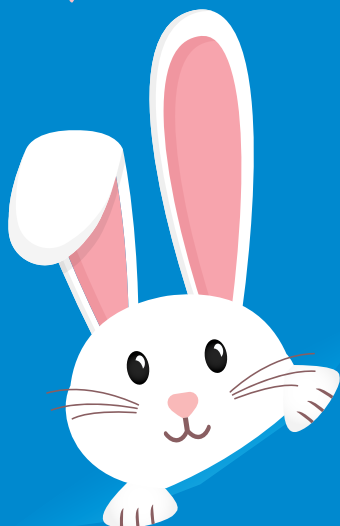
wear-and-tear, ensuring our equipment can withstand severe weather. We are laser-focused on providing our CMS Electric members with reliable, affordable energy. That's why fuel diversity — or placing our eggs in multiple baskets — is essential to reliability.

### The Bottom Line

Lowering the overall carbon footprint in this country means we're going to electrify more and more of our economy. Solar and wind power are an important part of a broader energy portfolio, but they are not available 24/7. In today's ever-connected world, people need power around the clock.

As our nation increasingly depends on electricity to power the economy, CMS Electric is working to anticipate, plan and respond to market trends and policy shifts. That's how we can power your home and our economy, while continuing to serve as your local energy provider.

**H·A·P·P·Y**  
*Easter*  
*April 9, 2023*



## Trustee Positions Open For Election

The Board of Trustees of the CMS Electric Cooperative, Inc. announce the following trustee's terms will expire in 2023 and their positions are open for election.

► District 1, Position C

**GARY WARDEN**

► District 2, Position C

**LINDA TOMLINSON**

► District 3, Position C

**KEITH RANDALL**

The board also announces that members wishing to serve on the board of trustees shall be nominated by presenting a petition to the cooperative office with the signatures of 15 valid members within the district they are to represent.

Blank petitions are available at the cooperative office in Meade, or call and one will be mailed to you. Completed petitions are due to the CMS office by April 4, 2023.

If you need additional information, please call CMS at 800-794-2353.



Gary Warden



Linda Tomlinson



Keith Randall

# Lineworker Appreciation Day April 10

Electric lineworkers provide an essential service: They install and maintain overhead and underground power lines that keep electricity flowing. These specialized workers are on call 24/7 in case severe storms or other circumstances cause the power to go out.

Lineworkers work with high-voltage electricity, often at great heights, in all kinds of weather conditions. Maintaining the power grid is physically demanding. To become proficient, most lineworkers go through a technical training program and first learn on the job as apprentices under the careful eye of seasoned lineworkers who have earned journeyman status.

Electric power line installers and repairers held approximately 126,600 jobs in 2021, according to the U.S. Bureau of Labor Statistics (BLS). Nearly half of these employees worked for electric power generation, transmission and distribution utilities.

## Safety Comes First

Lineworkers spend numerous hours in safety training each year and must understand and apply crucial safety regulations.

Protective clothing is required to shield lineworkers since they work around high voltages. Collectively, gear components can weigh up to 45 pounds.

According to the U.S. BLS, electric power line installers and repairers typically:

- ▶ Install, maintain or repair the power lines that move electricity.
- ▶ Identify defective devices, voltage regulators, transformers and switches.
- ▶ Inspect and test power lines and auxiliary equipment.
- ▶ String (install) power lines between poles, towers and buildings.
- ▶ Climb poles and transmission towers and use truck-mounted buckets to access equipment.
- ▶ Operate power equipment when installing and repairing poles, towers and lines.
- ▶ Know and implement safety standards and procedures.

When a problem is reported, lineworkers must identify the cause and fix it. This usually involves diagnostic testing using specialized equipment and repair work. To work on poles, they usually use bucket trucks to raise themselves to the top of the structure, although all lineworkers must be adept at climbing poles and towers when necessary. Workers use specialized safety equipment to keep them from falling when climbing utility poles and towers.

Storms and other natural disasters can cause extensive damage to power lines. When power is lost, line repairers must work safely and efficiently to restore service. We salute our lineworkers who work around the clock to keep the power on. Their safety, as well as yours, is our top priority.



# SPRING EFFICIENCY WORD SCRAMBLE

Did you know there are several ways you can save energy during spring months? Read the efficiency tips below and unscramble the **bolded** letters to reveal how you and your family can save energy during springtime.

Don't forget to check your work in the answer key below!



Sealing air leaks around doors and **diwwson** saves energy and keeps your home comfortable.

---

LED **hlgist** typically use 75% less energy than traditional incandescent lightbulbs.

---

Unplug devices and electronics that consume energy even when they're not in use, like phone **scragher**.

---

Planting shade **esrte** around your home can block unwanted heat from the sun.

---

Ceiling fans cool people, not rooms. Turn them off when you leave the room to save **yengre**.

---

Answer Key: 1. windows 2. lights 3. chargers 4. trees 5. energy